

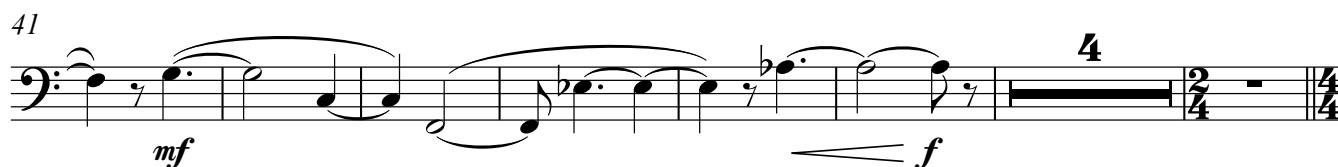
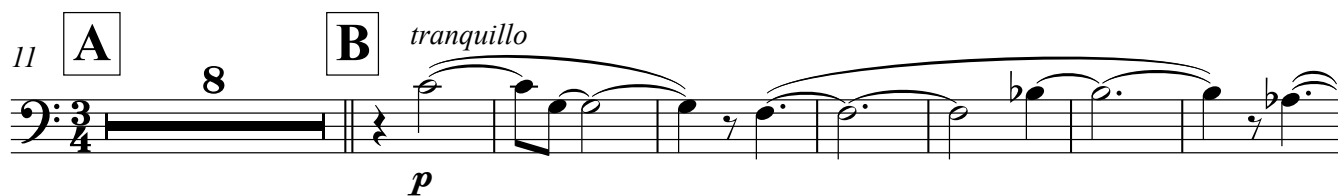
Bassoon 2

# Sex and Death at Covent Garden

## 1. Intrada Lento

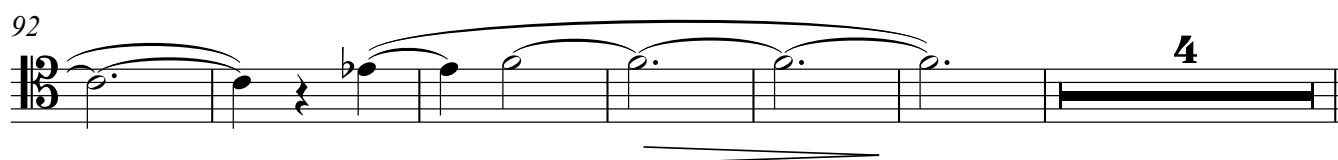
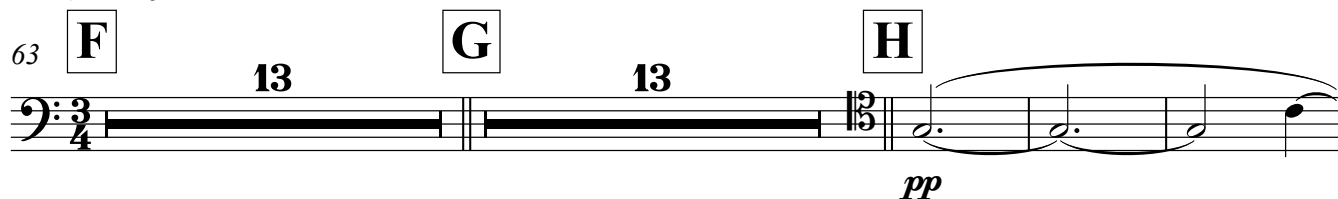
Charlie Barber

♩ = 60



## 2. Recitative + Aria

♩ = 116



## Charlie Barber - Sex &amp; Death at Covent Garden

## Bassoon 2

102 **I**

111 **J**

123 **K**

132

141 **L**

152 **M**

159

167 **N**

171

171

Detailed description: This page contains eight staves of music for Bassoon 2, numbered 102 to 171. The music is in 12/8 time and features various dynamics and articulations. Staves 102-111 (labeled I and J) are in the treble clef. Staves 111-123 (labeled J and K) are in the treble clef. Staves 123-132 (labeled K) are in the treble clef. Staves 132-141 are in the treble clef. Staves 141-152 (labeled L) are in the bass clef. Staves 152-159 (labeled M) are in the bass clef. Staves 159-167 are in the bass clef. Staves 167-171 (labeled N) are in the bass clef. The music includes various dynamics such as *p*, *fp*, *mf*, *pp*, *cresc.*, and *f*. There are also articulations like accents and slurs. Some staves have repeat signs with first and second endings.

177 **O**

*p* *mf* *cresc.* *f* *p*

184

*mf* *f* *mp* *p*

193 **P**

*p* *cresc.* *mf* *p* *f* *mf*

200 **Q**

*p* *p* *p* *p* *p* *p* *p* *p*

209

*f* *f* *f* *f* *f* *f* *f* *f*

218 **R**

*f* *f* *f* *f* *f* *f* *p*

225

*f* *f* *f*

228 **Attacca**

*f* *f* *f* *f*

## 3. Allegro

♩ = 132

233 **S**

3

*p* *cresc.* *f* *f*

245

7

*f* *mf*

258

*f*

264 **T**

15

*mp*

283

*f* *f*

289 **U**

7 2

*f* *mf*

301

*f*

305 **V**

*p* *cresc.* *f* *mf*

314

*p* *f*

322

*mf* *p* *cresc.*

328 **W**

*f* *mf*

342 **X**

*f* *mf*

373 **Y**

*f* *mf*

382

*p* *cresc.*

391 **Z**

*mf* *p* *cresc.* *f* *p < f*

402

*f*

11

418

*mf*

5

427

**AA**

16

*mf*

*f*

2

451

**BB**

10

*mf*

466

**CC**

*f marc.*

472

477

482 **DD** **11**

*f* *f*

499 **2**

*ff*

505

*p* *f*

**4. Cadenza**  
**Adagio**

$\text{♩} = 60$

509 **EE** **6**

*mp* *cresc.*

519 **5**

*mf* *f* *cresc.* *f*

529

*mf* *dim.*

535 **Rall.**

*mp* *p* *pp* *a niente*